

ADS

ADVANCED
POLYMERIZATION
SYSTEM



ONE SHADE FOR ALL SHADES



Technology

APS
ADVANCED
POLYMERIZATION
SYSTEM

**REAL
CHAMELEON
EFFECT**

- Shade transmission facilitated due to the low concentration of camphorquinone in the composition: the APS system uses more transparent photoinitiators;
- Amplified polymerization capacity;
- Longer working time under the reflector's/ambient light;
- Increased mechanical properties;
- **Chameleon effect:** Due its characteristics of chromatic mirroring, the composite captures and reflects the shade of the dental substrate during the polymerization process. The load, well-dosed opacity and esthetics of the APS system are fundamental to reach the perfect mimicry;
- **High esthetics and mechanical resistance:** Besides excellent shine and polishing, it has high rates of flexural strenght and fracture resistance to withstand the stress resulting from masticatory forces.



**COMPOSITE FOR
ALL THE SHADES**

**FROM BLEACH TO D4
FOR ANTERIOR AND
POSTERIOR TEETH**

- **Universal chroma:** From Bleach to D4 with only one shade! It does not require layering in most cases and enables the adoption of a simple incremental technique, without using different degrees of opacity/translucency;
- **Practicality and economy:** It does not require shade selection and, therefore, allows for faster restorative procedures, increases the professional's productivity and reduces the stock of the shades.



- BPA free composite and syringe.



THE REAL CHAMELEON EFFECT

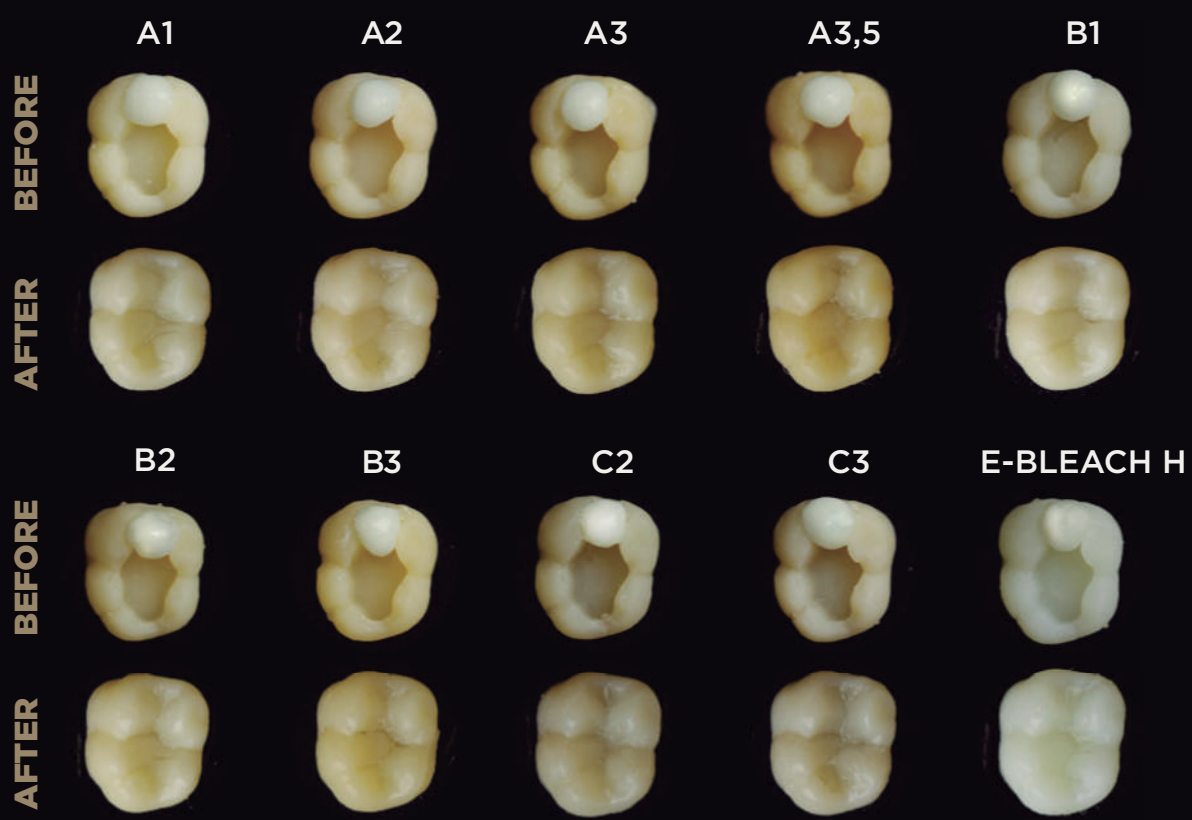
The optical properties of Vittra APS Unique define themselves after its polymerization. The chameleon effect occurs due to the chromatic mirroring characteristics of the composite, which is capable of capturing and reflecting the shade of the dental substrate.

Before the polymerization, the contrast and the opaquer shade of the composite facilitate the visualization and control of the restorative procedure.

Lastly, the fillers, the well-dosed opacity, and the esthetics of the APS technology are fundamental to achieve perfect mimicry.



BEFORE AND AFTER POLYMERIZATION

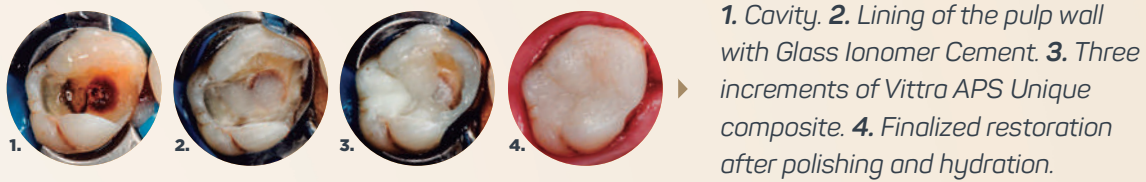


INDICATIONS

- Permanent and deciduous teeth: direct restorations of anterior and posterior teeth (classes I, II, III, IV, V, and VI).



- For cavities of classes I, II, V, and VI, in case of darkening, cover the area with dentin composite or Vittra APS composite and proceed with the restoration using the incremental technique with Vittra APS Unique.



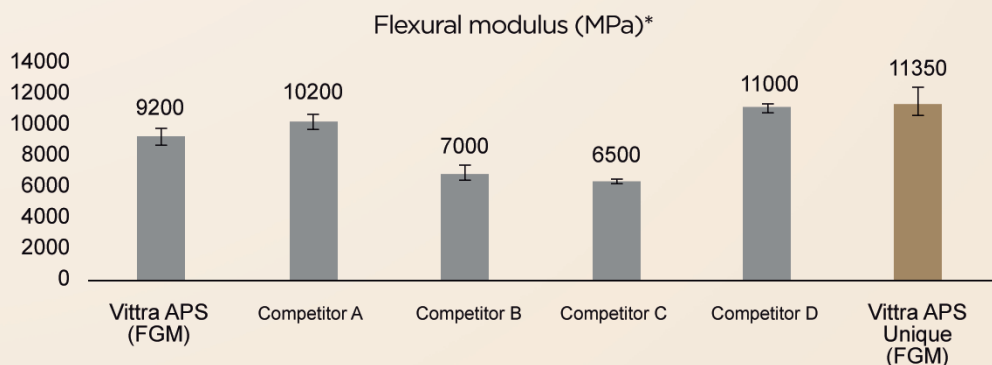
- Class III and IV cavities (without a back wall that provides shade support): make a layer that will serve as a background for the restoration and finalize the rest of the volume with Vittra APS Unique incrementally.



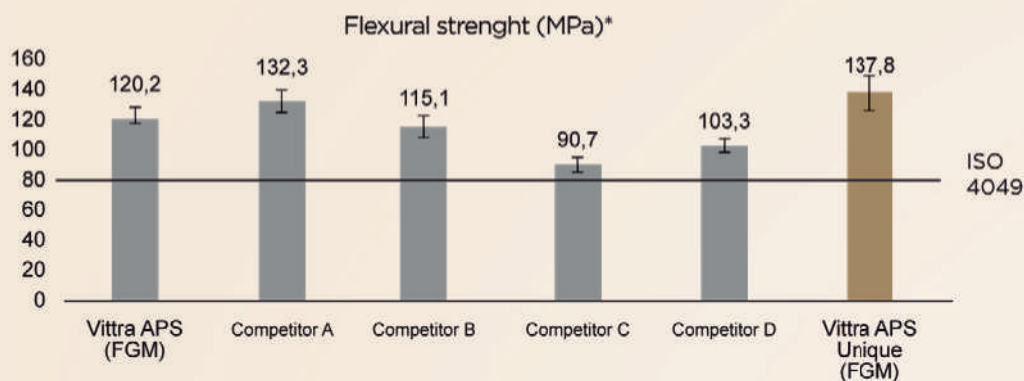
TIP: USING BACKGROUND COMPOSITE

When there is no background wall to copy or if there is a shade modification in the dental substrate, such as darkening exacerbated by the formation of tertiary dentin, amalgam staining, or other stains without defined origin, the use of background composite as shade support for Vittra APS Unique is necessary.

SCIENTIFICALLY PROVED APS TECHNOLOGY



Vittra APS Unique presented compatible result to what is stated in the literature for human dentin (between 11700 and 18300MPa***) and higher than competitors analyzed, demonstrating excellent resistance to occlusal forces, thus proving suitable for all classes of restorations.



Vittra APS Unique features flexural strenght superior to most competing products analyzed, with results up to 70% higher than the reference stipulated by the ISO 4049 standard (>80 MPa). The greater result, the greater the capacity of the composite to withstand the stress resulting from masticatory forces.

*Internal data. **Anusavice, K.J.; Shen, C; Rawls, H.R. - *Phillips Materiais Dentários*. 12ª Edition. Rio de Janeiro: Elsevier, 2013.

OPINION OF THE SPECIALISTS!



“A composite for clinical situations that require agility, stock economy, and clinical time gain, with an interesting esthetic result without compromising the quality of one’s work.”

Dr. Claudio Sato and Dr. Adriano Sapata

“Vittra APS Unique was the greatest discovery of 2020 in my opinion. It facilitates many situations due to the power of mimicry that this composite has. In my clinical routine and in my courses, I show how it is possible to use it in repair situations, diastema closures, incisal augmentations, reanatomizations and even pediatric dentistry.”



Dr. Glauco Menezes



“To simplify with quality! Vittra APS Unique is one of the rare choices that allow the clinician to minimize steps and always get the shade of their restorations right! Vittra APS Unique is unique.”

Dr. Dayse Amaral



Vittra APS Unique is also for you! Scan the QR Code with your cellphone for more information.

Why you should use Vittra APS Unique:
ONE COMPOSITE, MANY POSSIBILITIES!

Restoration in anterior tooth and diastema closure



Dr. Rodrigo Reis



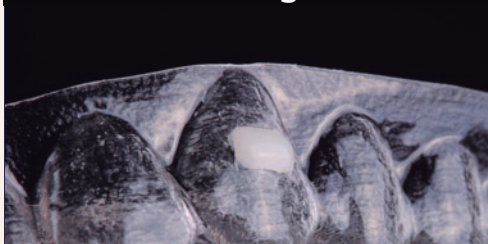
Pediatric dentistry



Dr. Dayse Amaral



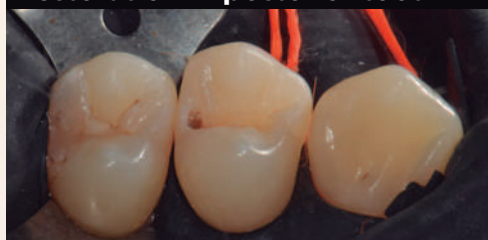
Use in invisible aligners



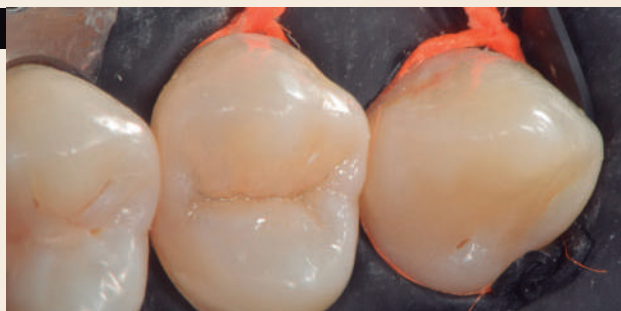
Dr. Thiago Roberto Gemeli



Restoration in posterior tooth



Dr. Claudio Sato and Dr. Adriano Sapata



Restoration over implants



Dr. Augusto Bessa



Technology

APS

ADVANCED POLYMERIZATION SYSTEM

FGM's unique technology consists of a combination of different photoinitiators that interact with each other and amplify the polymerization capacity of light emitted by the light-curing devices.

One of these photoinitiators remains the camphorquinone (in very low concentration), used only to initiate a chain reaction with free radical multiplication as sequential propagation occurs.

That way, camphorquinone was added just as a "trigger", because, since it is sensitized by the light length emitted by all the light-curing devices available in the market, professionals can use all the benefits of the APS even when using their conventional light-curing equipment, without having to invest in specific equipment.

Distributed by:

www.drcnz.co.nz | [0800 372 972](tel:0800372972) | info@drcnz.co.nz
PO Box 389, Silverdale, Auckland 0944

