

Green X™ NEW GREEN 3D INNOVATION

vatech
australasia



- 4-IN-1 DIGITAL X-RAY IMAGING SYSTEM
[PANO / CEPH / CBCT / MODEL SCAN]
- MULTI FOV SELECTION
- GREEN SCAN TIME
- ENDO MODE WITH HIGH RESOLUTION
- INSIGHT 2.0 FEATURE
- 3D SCANNING FOR MODEL



Green CT Sensor & Tube
10 Year Green Warranty Program



Green X™ NEW GREEN 3D INNOVATION

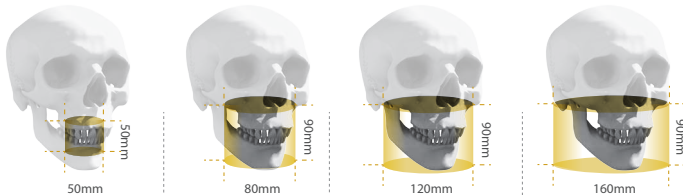
vatech
australasia

THE ADVANCED 4-IN-1 DIGITAL X-RAY IMAGING SYSTEM

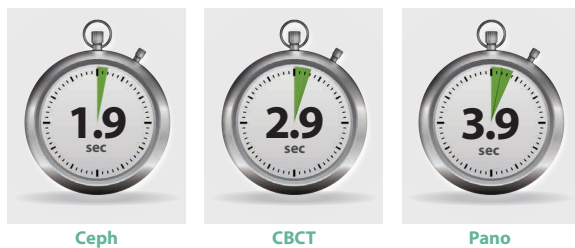
Green X is an advanced 4-in-1 digital x-ray imaging system that incorporates Pano, Ceph (optional), CBCT, and Model Scan. With Vatech's extensive experience in the dental imaging field, Green X provides high-quality images with lower radiation by combining image processing.

MULTI FOV SELECTION

Green X offers a range of selectable fields of view allowing users to select the optimum FOV mode while minimising exposure to areas that are not in the region of interest. The selection includes the following FOV sizes for diagnostic needs: 16x9, 12x9, 8x9, 8x5, 5x5 and 4x4. These options cover the full arch region, sinus and left/right TMJ, and suits most multiple implant and oral surgery cases.



	FOV 4x4/5x5	FOV 8x5/8x9	FOV 12x9	FOV 16x9
REGION	- Single tooth capture	- Central dentition - TMJ (R or L)	- Dual arch including sinus and nerve - TMJ (R or L)	- Back border of jaw (Ramus) - Dual arches back to the 3 rd molars plus sinus - Central incisor to spine
Clinical Implication	- Implant single site - Endo - Perio - Complex impaction (3rd) - OMS - Supernumerary: Ortho	- Implantology - Guided Surgery - General Dentist - OMS - Orthodontics	- Surgical guides - Sinus lifts - Bone grafting - Bi lateral sinus augmentation	- Surgical Guides - Sinus lifts for both sinuses - Complex orthognathic cases - Simultaneous diagnosis for both TMJs



GREEN SCAN TIME

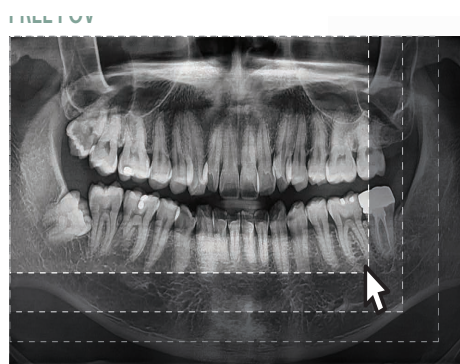
Due to its scan time, Green X minimises motion artifact enabling faster workflow and producing superb diagnostic images.

ENDO MODE WITH HIGH RESOLUTION

With its 4cm x 4cm volume mode and 49.5 micron voxel size, Endo mode will optimise treatment of highly-focused regions of interest. Ideal for endodontic use as it produces an extraordinary image in a high-resolution voxel size.

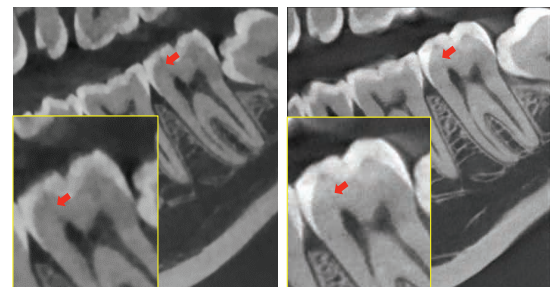
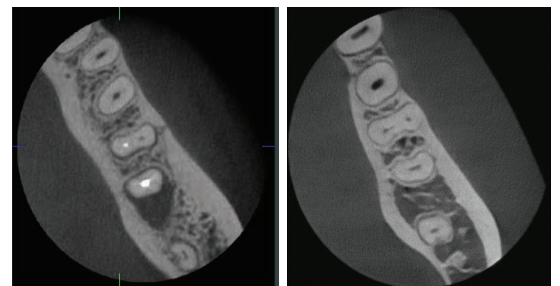
INSIGHT 2.0

The Insight Pan is capable of taking a multi-layered panoramic image (an Insight Pan), which provides a unique in-depth look across a single focal trough. Insight 2.0 has an upgraded free FOV feature enabling the capture of just the area of interest.



CAD/CAM integration
• Sufficient level of detail for surgical guide design

DENTAL MODE VS. ENDO MODE



Specially designed Jig

• Stable protection from partial model to full model



3D SCANNING FOR MODEL

3D model scan enables users to store plasters as digital models.

Pricing excludes GST and Freight and is subject to change without notice.

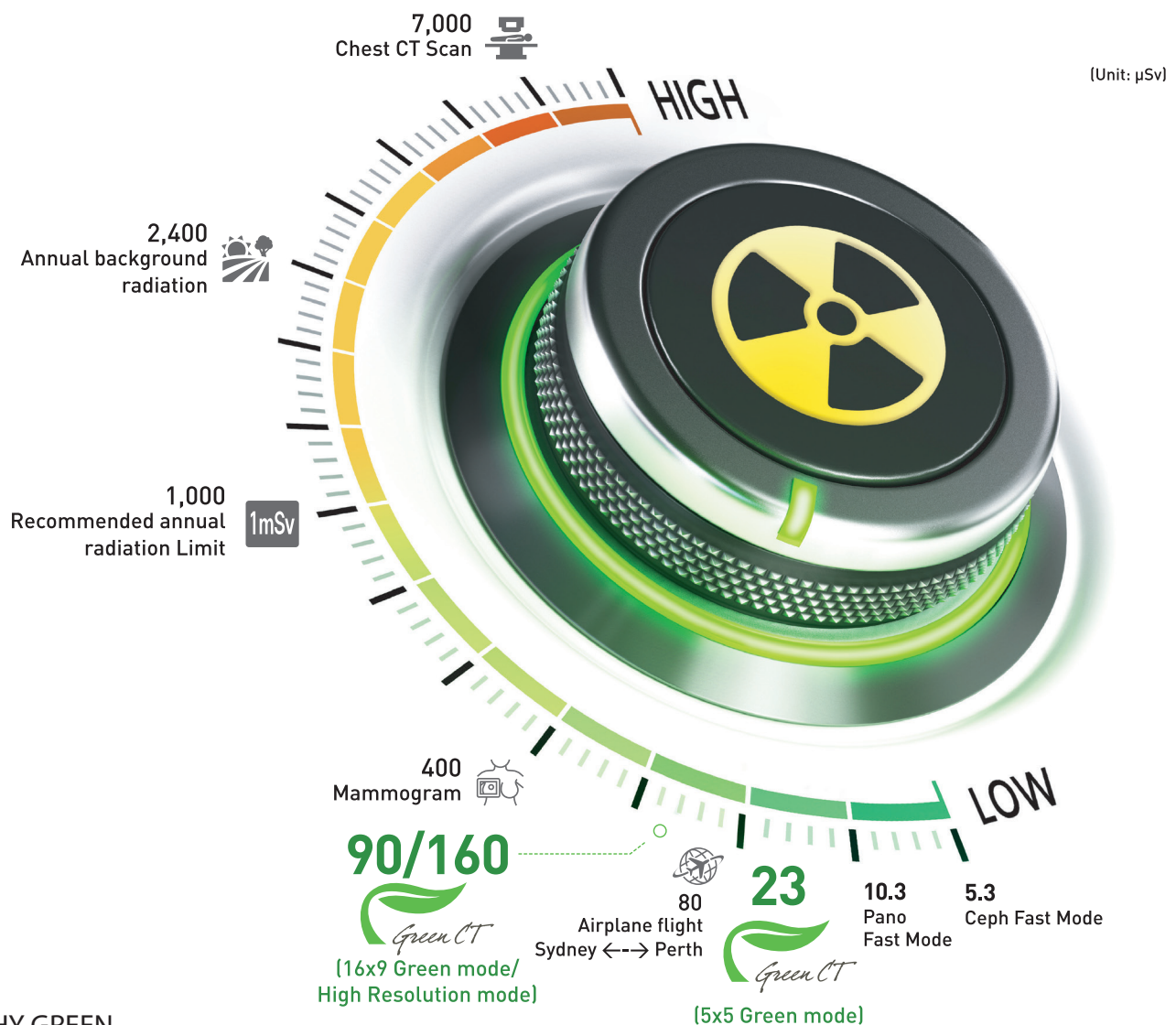
www.drcnz.co.nz | 0800 372 972 | info@drcnz.co.nz

PO Box 389, Silverdale, Auckland 0944



vatech

GREEN CT How safe is it?



WHY GREEN

VATECH is a pioneer of green dental imaging.

Green CT from VATECH provides high quality images at significantly lower X-ray dose, contrary to popular belief that low radiation results in inferior images. Green CT cares for your patient as well as your practice.

Taking an x-ray image is not a pleasant experience for most patients. Green CT scanning ends before patients feel discomfort. Reduced motion artifacts and improved image quality are the icing on the cake. Experience Green scan time, the advanced green technology by VATECH.